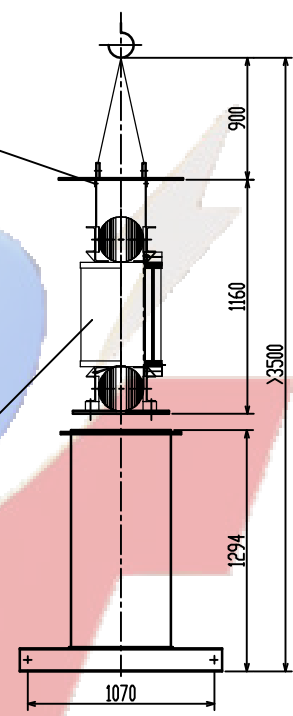
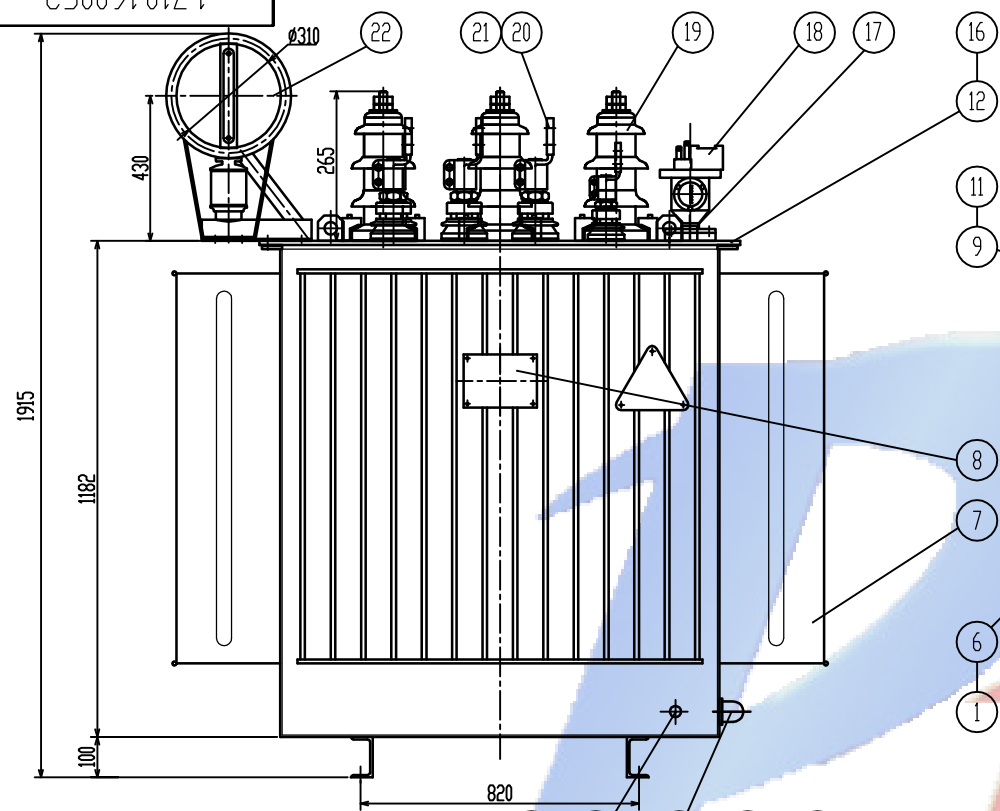
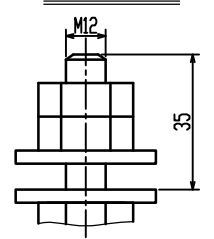


1.710.1600G2

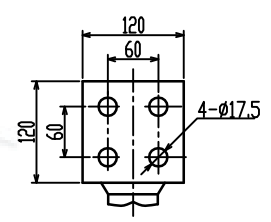


Weight List (kg)		
Oil	Body	Total
746+	2145+	3950+

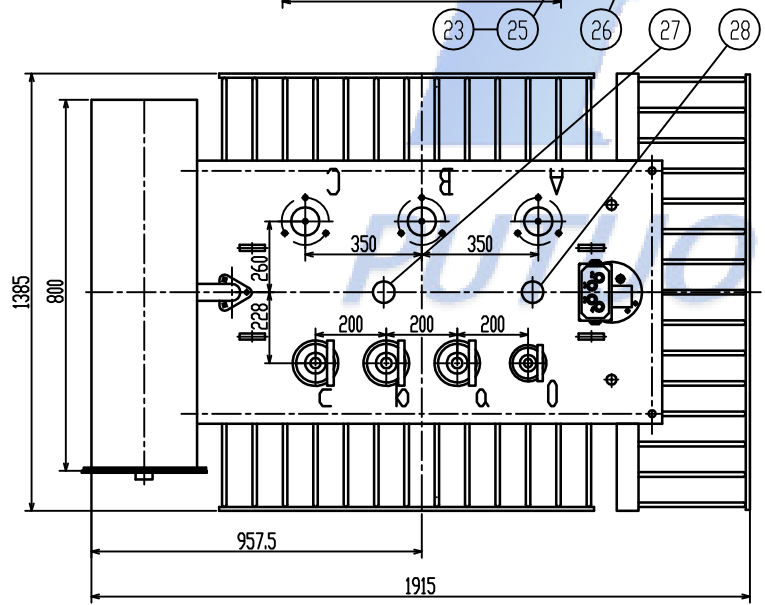
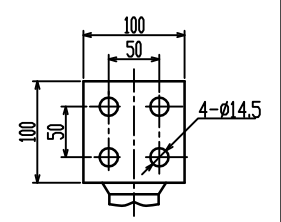
HV terminal



LV terminal



0-ph terminal



Used for

				S11-1600/6,10,11		1.710.1600G2	
				Transformer			
				Uk=4.5%			
				Dyn11		Putuo Electric	
Mark	No.	Changed file No.	Signature	Date	Pattern Mark	W. (KG)	Proportion
Draft			Technology		S A		
Design		-	Standard		1 Page In Total		Page 1
Check			Approval				
Examine			Date	22/12/1			